

Leaves with unusual colours

Mites, powdery mildew (Podosphaera aphanis), viruses, phytoplasmas, abiotic causes

Damage:



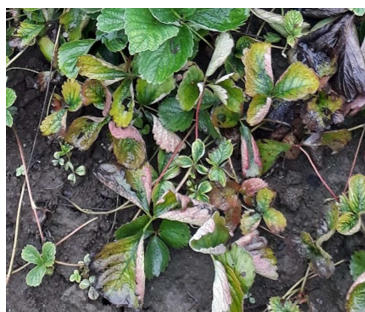
Spider mites: Patches of yellowish/bronzed leaves, stippled upon closer examination



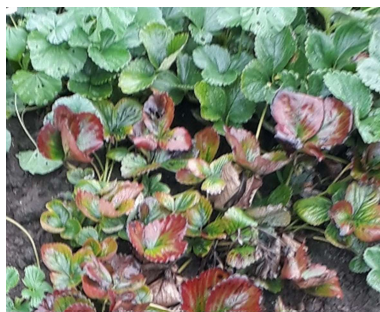
Powdery mildew (*Podosphaera aphanis*): Patches of upturned



Viruses often cause both mottling and distortion



Strawberry Lethal Yellows is a phytoplasma infection, causing yellowing, stunting, and upward leaf curl of the whole plant



When Liberibacter infects a strawberry plant, it causes stunting and reddening of the whole plant



herbicide (glyphosate) damage



Nitrogen deficiency starts with older leaves yellowing



phosphorous deficiency



Iron deficiency starts as yellowing between the veins on the youngest leaves

Identification:

Examine undersides of leaves with hand lens for presense of arthropods or fungal spores. See individual pest and disease fact sheets for photos, and control measures.